

ANGELA LINDVALL'S ECO-CHIC (P. 160)

March 2009

# marie claire

## THE BIG FASHION ISSUE!

Jennifer Aniston,  
Drew Barrymore  
+ Ginnifer Goodwin

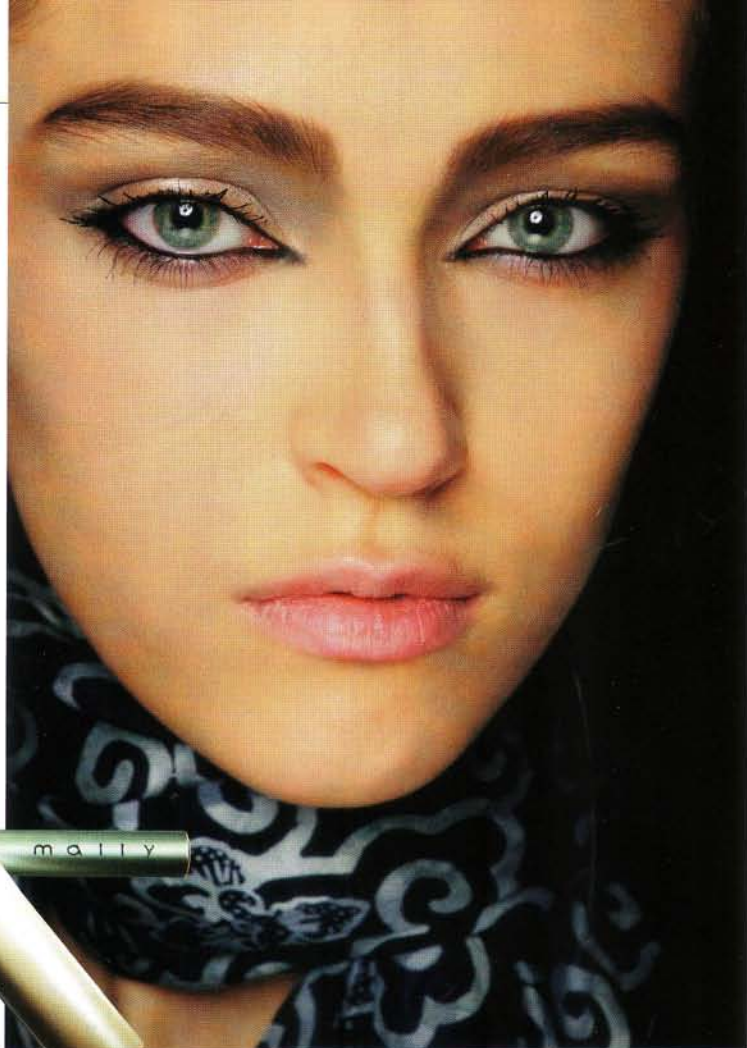




**SUPERMODEL SKIN SECRET**  
Créaline H<sub>2</sub>O, the gentle-as-water makeup remover exclusive to European pharmacies (and unanimously favored by backstage beauties), has finally met its match: Avène's Micellar Lotion, \$17. It's equally mild, calms irritated skin, and can be found in drug-stores on our home turf.

## Making Eyes

The season's smartest beauty investment: Mally Beauty Evercolor Lasting Liner, \$25. Its marathon wear and two brushes translate into a parade of day-to-date liner-embellished looks straight from the spring runways.



THIS MONTH'S BEST

# beauty buys

By Beauty Director Ying Chu

**LASH LUST:** *I've got my eyes on the new Rx-only eyelash growth enhancer, Latisse. Formulated from a glaucoma drug with fringe benefits, it promises longer, fuller lashes in 16 weeks.*



## Beach Red

**SPLURGE** A splashy getaway at the celeb-studded One&Only Resorts in an exotic locale like Mexico, the Maldives, or Dubai.

**STEAL** One&Only Red, \$28.75, a timeless polish created by Parisian pedicurist Bastien Gonzalez.

**CLICK & BUY NOW**  
oneandonlyresorts.com/bastiengonzalez

## CROWNING GLORY

J.Lo can thank Mom for her booty, but credit for her creative coifs goes to hair maestro Oribe. The launch of his new haircare and styling line means that you too can whip up red-carpet-worthy looks—On the 6-era bedroom waves or smooth Academy Award glamour 'dos—at home.



## SPRING AWAKENING

Dermatologist Dr. Dennis Gross gave me one more reason to be thankful winter's almost over: "Certain chemicals that dry out skin, like chlorine, are more potent in water during colder months because there's no humidity to help them evaporate," he says. Till the mercury rises, I'm stockpiling MD Skincare Purifying Bath Crystals, \$42, with Himalayan salt, aloe, and calming colloidal oatmeal.



A close-up photograph of a person's face, focusing on the eye area. A gold-colored tube, likely a cosmetic applicator, is positioned near the eye. The person is wearing a dark, patterned garment.

# beautybuys

By Beauty Director Ying Chu

ed

hy  
eb-  
y  
c  
the

e-  
l  
rist

7

lez



## SPRING AWAKENING

Dermatologist Dr. Dennis Gross gave me one more reason to be thankful winter's almost over: "Certain chemicals that dry out skin, like chlorine, are more potent in water during colder months because there's no humidity to help them evaporate," he says. Till the mercury rises, I'm stockpiling MD Skincare Purifying Bath Crystals, \$42, with Himalayan salt, aloe, and calming colloidal oatmeal.